



CHEM FLOWTRONICS

Flanged Sight Flow Indicators

Models 100, 101



The Chem Flowtronics Model 100 and 101 standard in-line flanged sight flows incorporate all the features shown on the front cover of the Sight Flow Indicator section and are available in 316 stainless steel (wetted parts) or carbon steel. Pipe line sizes are available up to 20 inches. Our Model 101 has face-to-face dimensions to match other manufacturers (specify when ordering.)

The Model 100-R and 101-R (rotor models) offer flow indication in "hard-to-see" applications. The rotors are manufactured of Teflon and offer full paddle exposure across the drip tube for positive one-directional rotation.

The Model 100-F and 101-F (flapper models) provide the flow detection and, depending upon process, show a variation in flow. These models are used for horizontal or upward flow.

Features:

- Largest Viewing Area in the Industry
- Lightweight for Easy Installation
- Glass Shield
- 150# Bolt Circle Rotating End Flanges
- Teflon Gaskets Standard
- Drip Tube Standard on All Models
- Tempered Borosilicate Glass Standard
- Pressure rating for all sight flow indicators: 150 PSIG
- Temperature rating with Teflon gaskets: 400°F

Options Available:

- A variety of alloy bodies available
- Tefzel PFA lining
- Special face-to-face dimensions
- 300 lb. flanges
- Stainless steel backup flanges
- Safety shields
- Chrome plating
- Other gasket materials: Viton, neoprene
- Stainless steel lens flanges and bolts (i.e. 100% stainless steel construction)
- Available with Flapper (101-F) or Rotor (101-R) visual flow identification
- Full ANSI rating

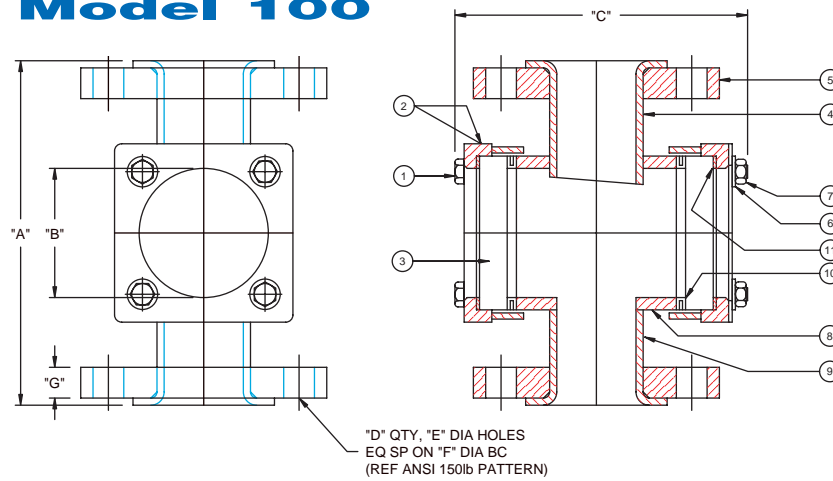


CHEM FLOWTRONICS

Chem Flow Corporation
P.O. Box 4635, Wayne NJ 07474-4635
Tel: 800-486-3356 · 973-785-0001 · Fax: 973-785-8051
Email: info@chem-flowtronics.com
Web: www.chem-flowtronics.com

Flanged Sight Flow Indicators

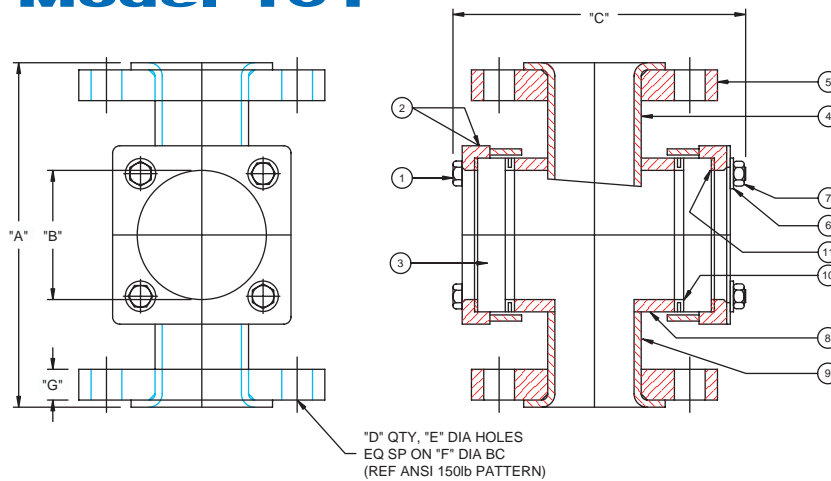
Model 100



DIMENSIONS, IN INCHES [mm]								
SIZE	"A"	"B"	"C"	"D"	"E"	"F"	"G"	APPROX WEIGHT LBS
1/2"	6.00 [152.4]	2.00 [50.8]	5.38 [136.5]	4	0.63 [15.8]	2.38 [60.3]	.44 [11.1]	7
3/4"	6.00 [152.4]	2.00 [50.8]	5.38 [136.5]	4	0.63 [15.8]	2.75 [69.9]	.50 [12.7]	8
1"	6.00 [152.4]	2.00 [50.8]	5.38 [136.5]	4	0.63 [15.8]	3.13 [79.4]	.56 [14.2]	9
1 1/2"	7.00 [177.8]	2.50 [63.5]	5.75 [146.0]	4	0.63 [15.8]	3.88 [98.4]	.63 [15.9]	17
2"	7.50 [190.5]	3.00 [76.2]	7.50 [190.5]	4	0.75 [19.1]	4.75 [120.7]	.75 [19.1]	18
3"	9.00 [228.6]	4.00 [101.6]	9.13 [231.8]	4	0.75 [19.1]	6.00 [152.4]	.94 [23.8]	30
4"	11.75 [298.5]	5.00 [127.0]	11.13 [282.6]	8	0.75 [19.1]	7.50 [190.5]	.94 [23.8]	50
6"	16.00 [406.4]	7.50 [190.5]	14.50 [368.3]	8	0.88 [22.2]	9.50 [241.3]	1.00 [25.4]	113

ITEM DESCRIPTION	
ITEM NO	DESCRIPTION
1	HEX BOLT
2	LENS FRAME
3	TEMPERED SIGHT GLASS
4	SS DRIP TUBE
5	NON-WETTED BACK-UP FLANGE
6	SPRING LOCK WASHER
7	HEX NUT
8	BODY
9	SS RECEIVING TUBE
10	TFE ENVELOPE GASKET
11	LENS GASKET
12	NAMEPLATE

Model 101



DIMENSIONS, IN INCHES [mm]								
SIZE	"A"	"B"	"C"	"D"	"E"	"F"	"G"	APPROX WEIGHT LBS
1/2"	6.00 [152.4]	2.00 [50.8]	5.38 [136.5]	4	0.63 [15.8]	2.38 [60.3]	.44 [11.1]	7
3/4"	6.00 [152.4]	2.00 [50.8]	5.38 [136.5]	4	0.63 [15.8]	2.75 [69.9]	.50 [12.7]	8
1"	5.63 [142.9]	2.00 [50.8]	5.38 [136.5]	4	0.63 [15.8]	3.13 [79.4]	.56 [14.2]	9
1 1/2"	6.50 [165.1]	2.50 [63.5]	5.75 [146.0]	4	0.63 [15.8]	3.88 [98.4]	.63 [15.9]	17
2"	7.88 [200.0]	3.00 [76.2]	7.50 [190.5]	4	0.75 [19.1]	4.75 [120.7]	.75 [19.1]	18
3"	9.38 [238.1]	4.00 [101.6]	9.13 [231.8]	4	0.75 [19.1]	6.00 [152.4]	.94 [23.8]	30
4"	11.00 [279.4]	5.00 [127.0]	11.13 [282.6]	8	0.75 [19.1]	7.50 [190.5]	.94 [23.8]	50
6"	14.25 [362.0]	7.50 [190.5]	14.50 [368.3]	8	0.88 [22.2]	9.50 [241.3]	1.00 [25.4]	113

ITEM DESCRIPTION	
ITEM NO	DESCRIPTION
1	HEX BOLT
2	LENS FRAME
3	TEMPERED SIGHT GLASS
4	SS DRIP TUBE
5	NON-WETTED BACK-UP FLANGE
6	SPRING LOCK WASHER
7	HEX NUT
8	BODY
9	SS RECEIVING TUBE
10	TFE ENVELOPE GASKET
11	LENS GASKET
12	NAMEPLATE