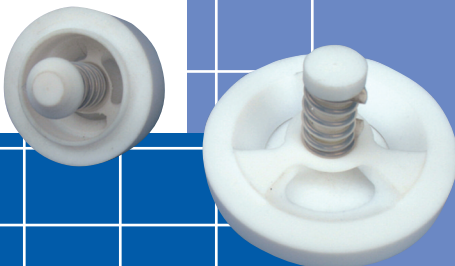




CHEM FLOWTRONICS

# Teflon Lined Check Valves



This series of check valves was developed for use on fluids compatible with the corrosion resistant characteristics of virgin PTFE. The body of the valve is made from a combination of ductile iron and steel. The body parts do not come into contact with the process flow. End connections are made with a PTFE reducing flange. This new series offers high physical strength in combination with the high corrosion resistance of virgin PTFE. The simple internal design provide for high flow rates at a very low pressure drop.

All wetted parts of CHem Flowtronics model 1850 spring loaded check valves are PTFE. The housing is a combination of ductile iron and steel

Size	Catalog No.	Description
1"	CV-25-TFE	TFE Lined Spring Loaded Check Valve
1½"	CV-40-TFE	TFE Lined Spring Loaded Check Valve
2"	CV-50-TFE	TFE Lined Spring Loaded Check Valve
3"	CV-80-TFE	TFE Lined Spring Loaded Check Valve
4"	CV-100-TFE	TFE Lined Spring Loaded Check Valve

CV-25-TFE  
CV-40-TFE  
CV-50-TFE

Max psi @ ambient – 150 psig

CV-80-TFE  
CV-100-TFE

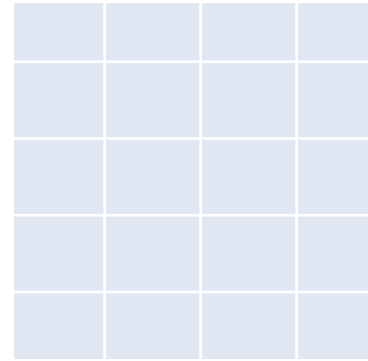
Max psi @ ambient – 100 psig

## Features:

- Low Pressure Drop
- High Flow Rates
- Spring Loaded Teflon® Wetted
- Long Cycle Life



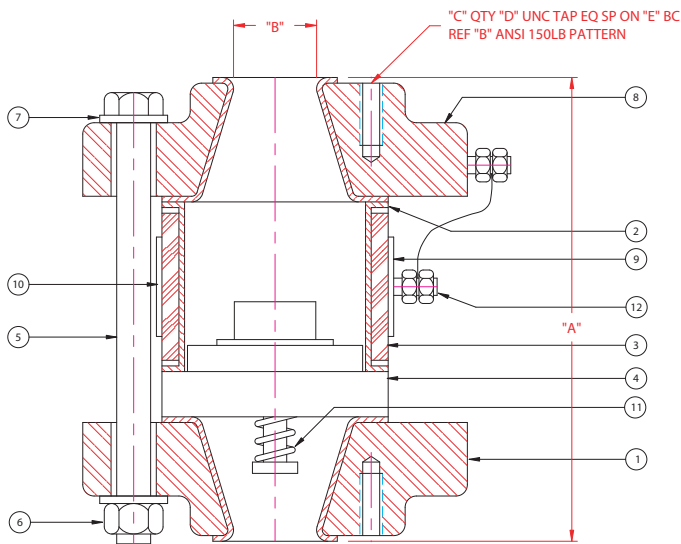
**CHEM FLOWTRONICS**



As shown, 1" valve with Grounding Lug

**Valve Size Face to Face**

1"	5 1/8"
1 1/2"	5 1/8"
2"	5 1/4"
3"	5 1/2"
4"	6 3/4"



DIMENSIONS, IN INCHES (mm)								
SIZE	CATALOG NUMBER	"A"	"B"	"C"	"D"	"E"	APPROX WEIGHT LBS	MAX PRESS AT AMBIENT TEMP
1"	CV-25-TFE	5.13 [130.2]	1.00 [25.4]	4	1/2"-13	3.13 [79.4]	15	150 PSIG
1 1/2"	CV-40-TFE	5.13 [130.2]	1.50 [28.1]	4	1/2"-13	3.88 [98.4]	15.5	
2"	CV-50-TFE	5.25 [133.4]	2.00 [50.8]	4	5/8"-11	4.75 [120.7]	26	
3"	CV-80-TFE	5.50 [139.7]	3.00 [76.2]	4	5/8"-11	6.00 [152.4]	36	100 PSIG
4"	CV-100-TFE	6.75 [171.5]	4.00 [101.6]	8	5/8"-11	7.50 [190.5]	55	

**BILL OF MATERIAL**

ITEM NO	DESCRIPTION	MATERIAL
1	PTFE LINED REDUCER	PTFE LINED
2	CENTER RING	PTFE
3	SPACER ASSEMBLY	PTFE LINED
4	PLUG AND SEAT ASSEMBLY	PTFE
5	BODY BOLTS	CADMIUM PLTD CS
6	HEX NUT	CADMIUM PLTD CS
7	FLAT WASHER	CADMIUM PLTD CS
8	PTFE LINED REDUCER	PTFE LINED
9	FLOW INDICATION TAG	ALUMINUM
10	NAMEPLATE	ALUMINUM
11	SPRING	PTFE LINED SS
12	GROUNDING LUGS AND WIRE	OPTIONAL

NOTES:  
 1- MAXIMUM TEMPERATURE: 400°F  
 2- ALL WETTED COMPONENTS: PTFE  
 3- FLANGE MATERIAL: DUCTILE IRON / STEEL  
 4- AVAILABLE WITH 316LSS FLANGES  
 5- OPTIONAL FACE TO FACE DIMENSIONS AVAILABLE

1	REVISED HARDWARE SIZES	021904	-
No.	DATE	CHECKED BY	
195 PATERSON AVE. LITTLE FALLS, NJ 07424      PHONE: (973) 785-0001 FAX: (973) 785-8051			
CUSTOMER:			
CHECK VALVE ASSEMBLY			
KCA	040603	1 = 1	1
DRAWN BY	CHECKED BY	DATE	SCALE
CV-XX-TFE			1 OF 1
			SHEET NO.

**Options:**

- All Metal Parts - Stainless Steel
- Non Standard Face To Face
- Grounding Lugs
- PFA/FEP Lined

Chem Flowtronics, Inc.  
 195 Paterson Ave., Little Falls, NJ 07424  
 Tel: 800-486-3356 • 973-785-0001 • Fax: 973-785-8051  
 E-mail: info@chem-flowtronics.com • Web: www.chem-flowtronics.com

