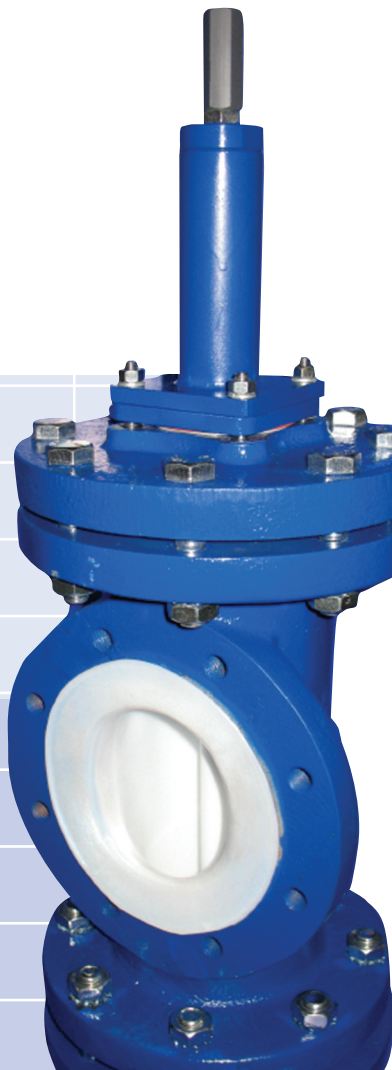




**CHEM FLOWTRONICS**

# Teflon Lined Relief Valves



The Chem Flow PTFE lined relief valves were developed for use on systems requiring the corrosion resistance compatibility offered by PTFE. The operating principle is the same as used in our regular line of corrosion resistant relief valves made of borosilicate glass. A simple flange connection is provided for safe venting and after every operation, the valve re-sets itself without the labor or material cost of a rupture disk replacement. The Chem Flow™ patented seat assures a perfect seal against liquids and gasses.

Size	Catalog No.	Description
1"	RV-25-TFE	1" x 1 1/2" PTFE Lined Relief Valve
1 1/2"	RV-40-TFE	1 1/2" x 2" PTFE Lined Relief Valve
2"	RV-50-TFE	2" x 3" PTFE Lined Relief Valve
3"	RV-80-TFE	3" x 4" PTFE Lined Relief Valve

When ordering specify set pressure	1"	1 1/2"	2"	3"
Minimum Set Pressure	5	5	3	3
Maximum Set Pressure psi	100	100	80	75
Maximum Operating Temperature	-400°F			

## ORIFICE CHART

Valve Size	Seat ID	Maximum Open Area
1"	0.935	0.686/in <sup>2</sup>
1 1/2"	1.465	1.686/in <sup>2</sup>
2"	2.025	3.220/in <sup>2</sup>
3"	3.025	7.187/in <sup>2</sup>

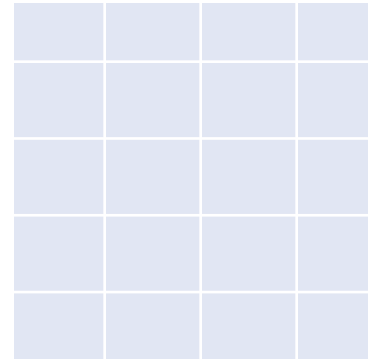
## Features:

- All Teflon® Wetted Parts
- Resets Automatically After Opening
- All Steel Reinforced Teflon® Components
- 50 Years of Tested Service

Chem Flowtronics, Inc.  
 195 Paterson Ave., Little Falls, NJ 07424  
 Tel: 800-486-3356 • 973-785-0001 • Fax: 973-785-8051  
 E-mail: info@chem-flowtronics.com • Web: www.chem-flowtronics.com



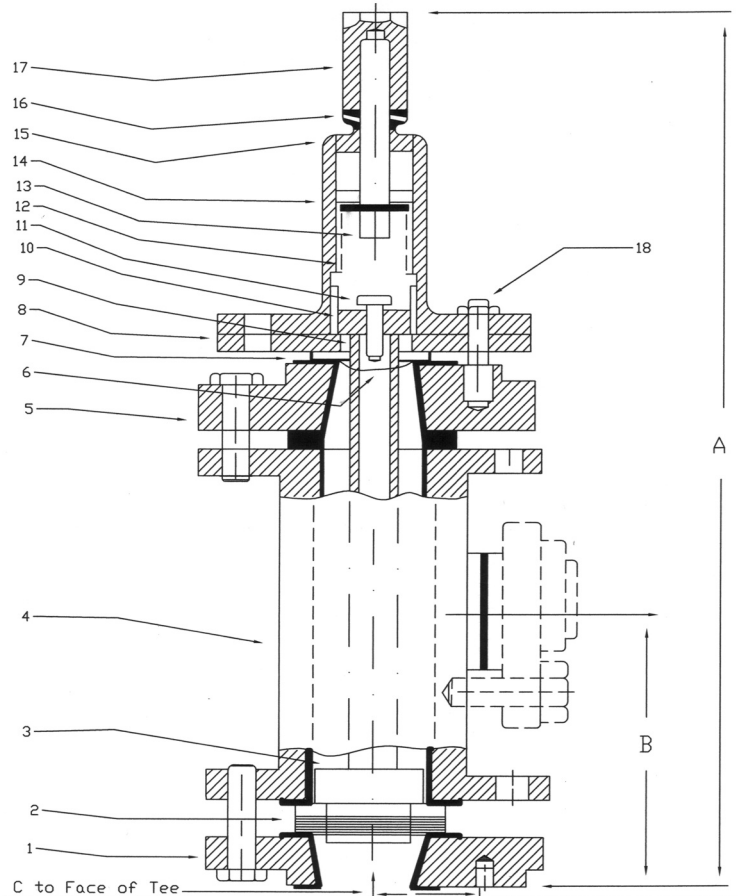
**CHEM FLOWTRONICS**



Inlet Valve Size	Outlet Size	A	B	C
1"	1 1/2"	18 5/8"	6 7/32"	1 1/2"
1 1/2"	2"	21 3/8"	6 29/32"	1 3/4"
2"	3"	23 1/4"	7 9/32"	2 1/4"
3"	4"	25 3/8"	8 29/32"	2 11/16"

# Tech Info

Item	Qty.	Description
1	1	Red. Flg. TFE
2	1	Valve Seat
3	1	Plunger Assembly
4	1	Tee TFE Lined
5	1	TFE Lined Flg.
6	2	Bonnet Diaphragm
7	1	Diaphragm Back-up Gasket
8	1	Bonnet Spacer
9	1	Compression Sleeve
10	1	Spring Guide
11	1	Screw
12	1	Spring
13	1	Adjusting Screw
14	1	Bonnet
15	1	Bonnet Cap
16	1	Jam Nut
17	1	Adjusting Screw Cap
18	4	1/2" - 13 to 5/16" - Step Stud



Seller warrants its equipment against defects in workmanship and material for a period of 12 months from date of shipment from the factory under normal use and service and otherwise when such equipment is used in accordance with instructions furnished by seller and for purposes disclosed in writing at the time of purchase, of any. Seller's liability under this warranty shall be limited to the replacement or repair, F.O.B. point of manufacture, of any defective equipment or part which, having been returned to the factory, transportation charges are paid has been inspected and determined by seller to be defective.

*THIS WARRANTY IS IN LIEU OF ANY OTHER WARRANTY, EITHER EXPRESSED OR IMPLIED, AS TO DESCRIPTION, QUALITY, MERCHANTABILITY, FITNESS FOR ANY PARTICULAR PURPOSE OR USE OR ANY OTHER MATTER.*

Under no circumstances shall Seller be liable to Buyer or any other third party for any loss of profits or other direct or indirect costs, expenses, losses or consequential damages arising out of or as a result of any defects in or failure of its products or any part or parts thereof or arising out of or as a result of parts or components incorporated in Seller's equipment but not supplied by the Seller.

Chem Flowtronics, Inc.  
 195 Paterson Ave., Little Falls, NJ 07424  
 Tel: 800-486-3356 • 973-785-0001 • Fax: 973-785-8051  
 E-mail: info@chem-flowtronics.com • Web: www.chem-flowtronics.com