



CHEM FLOWTRONICS

Flanged "Dual Window" Sight Flow Indicators



Models 102, 103, 104

The Chem Flowtronics Models, 102, 103, and 104 standard in-line flanged sight flows incorporate all the features shown on the front cover of the Sight Flow Indicator section and are available in 316 stainless steel (wetted parts) or carbon steel. Pipe line sizes are available up to 20 inches. Our Model 102 (right flow pattern) sight flow offers you flexibility of design where in-line or size requirements are not standard.

The Model 103 or "T" sight flow indicator gives you positive view of flow to three connecting lines. Primarily used in distillation and extraction processes for positive identification of flow.

Our Model 104 offers what no other manufacturer can, namely, a sight flow cross. This unique design can be used in tank manifold systems for positive flow identification of three independent tanks.

Features:

- Largest Viewing Area in the Industry
- Lightweight for Easy Installation
- Glass Shield
- 150# Bolt Circle Rotating End Flanges
- Teflon Gaskets Standard
- Drip Tube Standard on All Models
- Tempered Borosilicate Glass Standard
- Pressure rating for all sight flow indicators: 150 PSIG
- Temperature rating with Teflon gaskets: 400°F

Options Available:

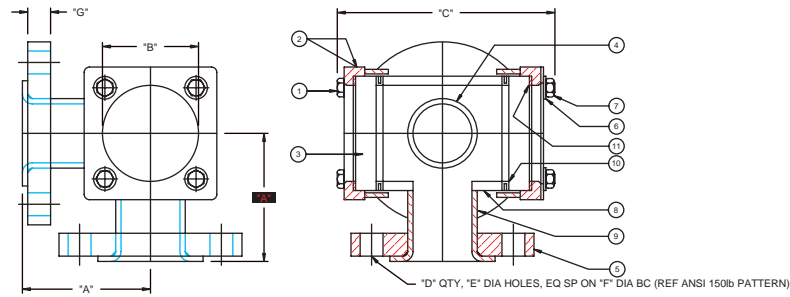
- A variety of alloy bodies available
- Tezfel/PFA lining
- Rotor • Flapper • Vent
- Instrument fittings
- Special face-to-face dimensions
- 300 lb. flanges
- Stainless steel backup flanges
- Safety shields
- Chrome plating
- Other gasket materials: Viton, neoprene
- Stainless steel lens flanges and bolts (i.e. 100% stainless steel construction)
- Full ANSI rated



CHEM FLOWTRONICS

Chem Flow Corporation
P.O. Box 4635, Wayne NJ 07474-4635
Tel: 800-486-3356 • 973-785-0001 • Fax: 973-785-8051
Email: info@chem-flowtronics.com
Web: www.chem-flowtronics.com

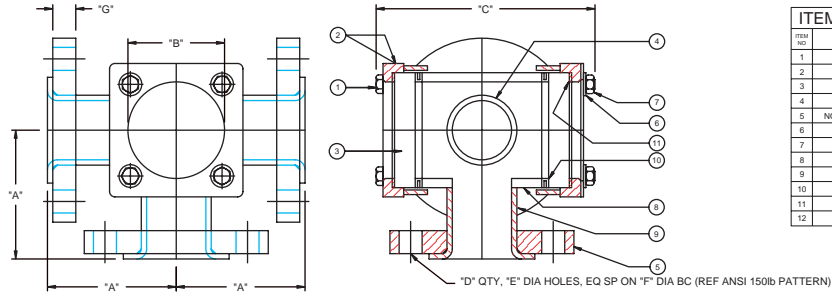
Model 102



ITEM DESCRIPTION	
ITEM NO	DESCRIPTION
1	HEX BOLT
2	LENS FRAME
3	TEMPERED SIGHT GLASS
4	SS DRIP TUBE
5	NON-WETTED BACK-UP FLANGE
6	SPRING LOCK WASHER
7	HEX NUT
8	BODY
9	SS RECEIVING TUBE
10	TFE ENVELOPE GASKET
11	LENS GASKET
12	NAMEPLATE

DIMENSIONS, IN INCHES [mm]								
SIZE	"A"	"B"	"C"	"D"	"E"	"F"	"G"	APPROX WEIGHT LBS
1/2"	3.00 [76.2]	2.00 [50.8]	5.38 [136.5]	4	0.63 [15.8]	2.38 [60.3]	.44 [11.1]	7
3/4"	3.00 [76.2]	2.00 [50.8]	5.38 [136.5]	4	0.63 [15.8]	2.75 [69.9]	.50 [12.7]	8
1"	3.00 [76.2]	2.00 [50.8]	5.38 [136.5]	4	0.63 [15.8]	3.13 [79.4]	.56 [14.2]	9
1 1/2"	3.50 [88.9]	2.50 [63.5]	5.75 [146.0]	4	0.63 [15.8]	3.88 [98.4]	.63 [15.9]	17
2"	3.75 [95.3]	3.00 [76.2]	7.50 [190.5]	4	0.75 [19.1]	4.75 [120.7]	.75 [19.1]	18
3"	4.50 [114.3]	4.00 [101.6]	9.13 [231.8]	4	0.75 [19.1]	6.00 [152.4]	.94 [23.8]	30
4"	5.88 [149.2]	5.00 [127.0]	11.13 [282.6]	8	0.75 [19.1]	7.50 [190.5]	.94 [23.8]	50
6"	8.00 [203.2]	7.50 [190.5]	14.50 [368.3]	8	0.88 [22.2]	9.50 [241.3]	1.00 [25.4]	113

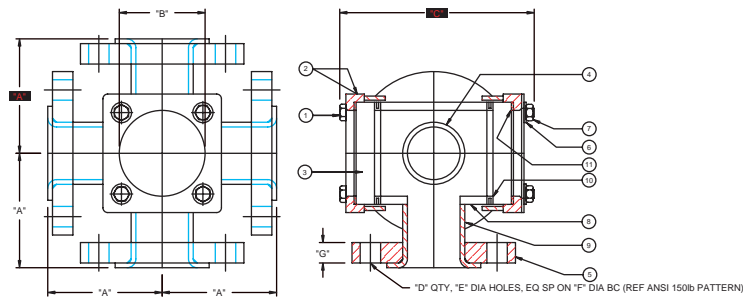
Model 103



ITEM DESCRIPTION	
ITEM NO	DESCRIPTION
1	HEX BOLT
2	LENS FRAME
3	TEMPERED SIGHT GLASS
4	SS DRIP TUBE
5	NON-WETTED BACK-UP FLANGE
6	SPRING LOCK WASHER
7	HEX NUT
8	BODY
9	SS RECEIVING TUBE
10	TFE ENVELOPE GASKET
11	LENS GASKET
12	NAMEPLATE

DIMENSIONS, IN INCHES [mm]								
SIZE	"A"	"B"	"C"	"D"	"E"	"F"	"G"	APPROX WEIGHT LBS
1/2"	3.00 [76.2]	2.00 [50.8]	5.38 [136.5]	4	0.63 [15.8]	2.38 [60.3]	.44 [11.1]	11
3/4"	3.00 [76.2]	2.00 [50.8]	5.38 [136.5]	4	0.63 [15.8]	2.75 [69.9]	.50 [12.7]	13
1"	3.00 [76.2]	2.00 [50.8]	5.38 [136.5]	4	0.63 [15.8]	3.13 [79.4]	.56 [14.2]	15
1 1/2"	3.50 [88.9]	2.50 [63.5]	5.75 [146.0]	4	0.63 [15.8]	3.88 [98.4]	.63 [15.9]	20
2"	3.75 [95.3]	3.00 [76.2]	7.50 [190.5]	4	0.75 [19.1]	4.75 [120.7]	.75 [19.1]	26
3"	4.50 [114.3]	4.00 [101.6]	9.13 [231.8]	4	0.75 [19.1]	6.00 [152.4]	.94 [23.8]	37
4"	5.88 [149.2]	5.00 [127.0]	11.13 [282.6]	8	0.75 [19.1]	7.50 [190.5]	.94 [23.8]	60
6"	8.00 [203.2]	7.50 [190.5]	14.50 [368.3]	8	0.88 [22.2]	9.50 [241.3]	1.00 [25.4]	121

Model 104



ITEM DESCRIPTION	
ITEM NO	DESCRIPTION
1	HEX BOLT
2	LENS FRAME
3	TEMPERED SIGHT GLASS
4	SS DRIP TUBE
5	NON-WETTED BACK-UP FLANGE
6	SPRING LOCK WASHER
7	HEX NUT
8	BODY
9	SS RECEIVING TUBE
10	TFE ENVELOPE GASKET
11	LENS GASKET
12	NAMEPLATE

DIMENSIONS, IN INCHES [mm]								
SIZE	"A"	"B"	"C"	"D"	"E"	"F"	"G"	APPROX WEIGHT LBS
1/2"	3.00 [76.2]	2.00 [50.8]	5.38 [136.5]	4	0.63 [15.8]	2.38 [60.3]	.44 [11.1]	15
3/4"	3.00 [76.2]	2.00 [50.8]	5.38 [136.5]	4	0.63 [15.8]	2.75 [69.9]	.50 [12.7]	17
1"	3.00 [76.2]	2.00 [50.8]	5.38 [136.5]	4	0.63 [15.8]	3.13 [79.4]	.56 [14.2]	20
1 1/2"	3.50 [88.9]	2.50 [63.5]	5.75 [146.0]	4	0.63 [15.8]	3.88 [98.4]	.63 [15.9]	25
2"	3.75 [95.3]	3.00 [76.2]	7.50 [190.5]	4	0.75 [19.1]	4.75 [120.7]	.75 [19.1]	32
3"	4.50 [114.3]	4.00 [101.6]	9.13 [231.8]	4	0.75 [19.1]	6.00 [152.4]	.94 [23.8]	44
4"	5.88 [149.2]	5.00 [127.0]	11.13 [282.6]	8	0.75 [19.1]	7.50 [190.5]	.94 [23.8]	68
6"	8.00 [203.2]	7.50 [190.5]	14.50 [368.3]	8	0.88 [22.2]	9.50 [241.3]	1.00 [25.4]	132