



**CHEM FLOWTRONICS**

## Threaded "Dual Window" Sight Flow Indicators



### Model 200

The Chem Flowtronics Model 200 is a threaded version of Model 100. Available in 316SS and carbon steel, standard.

The Model 200-R (with rotor) design offers a solid teflon full-cross-section rotor in flow area for "hard to see" fluids. Options are the same as the Model 200.

The Model 200-F with teflon flapper gives you flow detection while showing you approximate flow rate. Options are the same as the Model 200 for horizontal or upward vertical flow.

Drip tube and teflon gaskets are standard.

### Features:

- Largest Viewing Area in the Industry
- Lightweight for Easy Installation
- Glass Shield
- Teflon Gaskets Standard
- Drip Tube Standard on All Models
- Tempered Borosilicate Glass Standard
- Pressure rating for all sight flow indicators: 150 PSIG
- Temperature rating with Teflon gaskets: 400°F

### Options Available:

- A variety of alloy bodies available
- Male ends
- Rotor • Flapper • Vent
- Instrument fittings
- Special face-to-face dimensions
- Safety shields
- Chrome plating
- Other gasket materials: Viton, neoprene
- Stainless steel lens flanges and bolts (i.e. 100% stainless steel construction)
- Full ANSI Rating

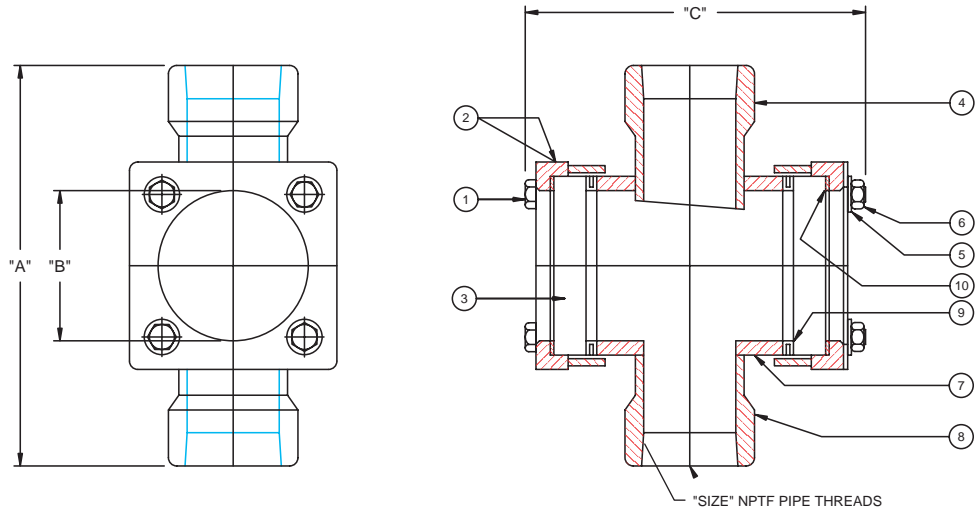


**CHEM FLOWTRONICS**

Chem Flow Corporation  
P.O. Box 4635, Wayne NJ 07474-4635  
Tel: 800-486-3356 · 973-785-0001 · Fax: 973-785-8051  
Email: [info@chem-flowtronics.com](mailto:info@chem-flowtronics.com)  
Web: [www.chem-flowtronics.com](http://www.chem-flowtronics.com)

# Threaded "Dual Window" Sight Flow Indicators

## Model 200



DIMENSIONS, IN INCHES [mm]				
SIZE	"A"	"B"	"C"	APPROX WEIGHT LBS
1/2"	6.00 [152.4]	2.00 [50.8]	5.38 [136.5]	5
3/4"	6.00 [152.4]	2.00 [50.8]	5.38 [136.5]	6
1"	5.63 [142.9]	2.00 [50.8]	5.38 [136.5]	8
1 1/2"	6.50 [165.1]	2.50 [63.5]	5.75 [146.0]	15
2"	7.88 [200.0]	3.00 [76.2]	7.50 [190.5]	17
3"	9.38 [238.1]	4.00 [101.6]	9.13 [231.8]	27
4"	11.00 [279.4]	5.00 [127.0]	11.13 [282.6]	46
6"	14.25 [362.0]	7.50 [190.5]	14.50 [368.3]	107

ITEM DESCRIPTION	
ITEM NO	DESCRIPTION
1	HEX BOLT
2	LENS FRAME
3	TEMPERED SIGHT GLASS
4	SS DRIP TUBE
5	SPRING LOCK WASHER
6	HEX NUT
7	BODY
8	SS RECEIVING TUBE
9	TFE ENVELOPE GASKET
10	LENS GASKET
11	NAMEPLATE



**CHEM FLOWTRONICS**

Chem Flow Corporation  
 P.O. Box 4635, Wayne NJ 07474-4635  
 Tel: 800-486-3356 · 973-785-0001 · Fax: 973-785-8051  
 Email: [info@chem-flowtronics.com](mailto:info@chem-flowtronics.com)  
 Web: [www.chem-flowtronics.com](http://www.chem-flowtronics.com)