



CHEM FLOWTRONICS

Tefzel Lined “Dual Window” Sight Flow Indicator

Model 501

The Chem Flowtronics Model 501, offers a high performance Tefzel liner with all the features of our 101/100 models. Rated at 300°F @ Full Vacuum. The Model 501 is cost effective and yet maintains a high manufacturing integrity at all levels of the process.

Features:

- Tempered borosilicate lens
- PTFE wetted gaskets
- Light-weight construction
- Lap joint “rotating” flanges

Options:

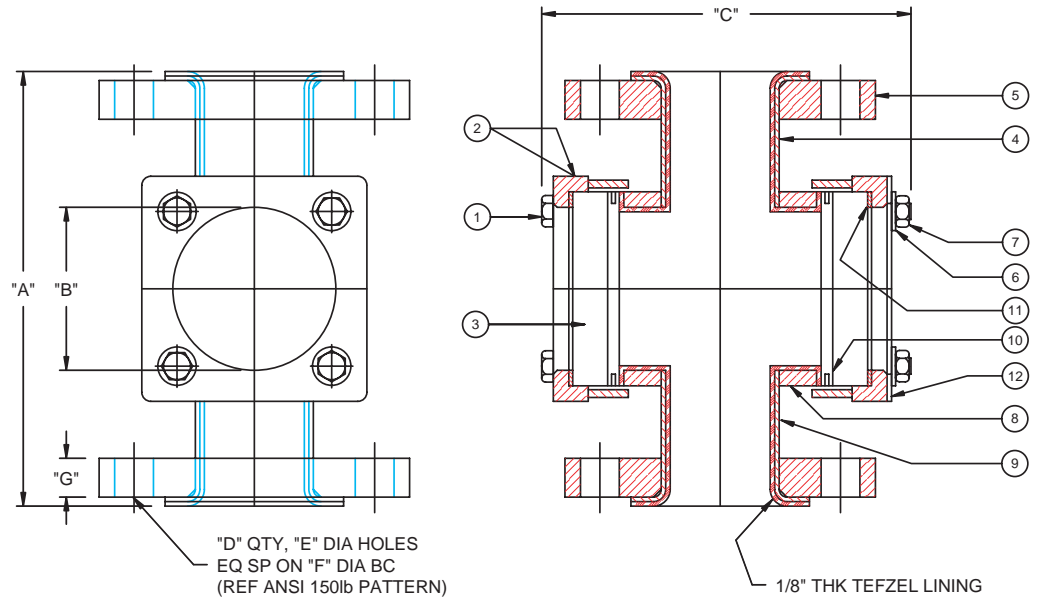
- PFA liner
- Stainless steel body and flanges
- Flapper and rotors
- Acrylic shields
- Special face-to-face
- Larger sizes on request
- Full ANSI rating



CHEM FLOWTRONICS

Chem Flow Corporation
P.O. Box 4635, Wayne NJ 07474-4635
Tel: 800-486-3356 · 973-785-0001
Fax: 973-785-8051
Email: info@chem-flowtronics.com
Web: www.chem-flowtronics.com

Model 501



DIMENSIONS, IN INCHES [mm]								
SIZE	"A"	"B"	"C"	"D"	"E"	"F"	"G"	APPROX WEIGHT LBS
1"	7.00 [177.8]	2.00 [50.8]	5.38 [136.5]	4	0.63 [15.8]	3.13 [79.4]	.56 [14.2]	9
1 1/2"	8.00 [203.2]	2.50 [63.5]	5.75 [146.0]	4	0.63 [15.8]	3.88 [98.4]	.63 [15.9]	17
2"	9.00 [228.6]	3.00 [76.2]	7.50 [190.5]	4	0.75 [19.1]	4.75 [120.7]	.75 [19.1]	18
3"	11.00 [279.4]	4.00 [101.6]	9.13 [231.8]	4	0.75 [19.1]	6.00 [152.4]	.94 [23.8]	30
4"	13.00 [330.2]	5.00 [127.0]	11.13 [282.6]	8	0.75 [19.1]	7.50 [190.5]	.94 [23.8]	50
6"	16.00 [406.4]	7.50 [190.5]	14.50 [368.3]	8	0.88 [22.2]	9.50 [241.3]	1.00 [25.4]	113

BILL OF MATERIAL			
ITEM NO.	DESCRIPTION	MATERIAL	QTY
1	HEX BOLT	CS ZINC PLATED	4
2	LENS FRAME	CS	2
3	TEMPERED SIGHT GLASS	TEMP BOROSILICATE	2
4	INLET TUBE	CS	1
5	BACK-UP FLANGE	CS	2
6	SPRING LOCK WASHER	CS ZINC PLATED	4
7	HEX NUT	CS ZINC PLATED	4
8	BODY	CS	1
9	RECEIVING TUBE	CS	1
10	TFE ENVELOPE GASKET	PTFE	2
11	LENS GASKET	NOBESTOS	2
12	NAMEPLATE	ALUMINUM	1



CHEM FLOWTRONICS

Chem Flow Corporation
 P.O. Box 4635, Wayne NJ 07474-4635
 Tel: 800-486-3356 · 973-785-0001
 Fax: 973-785-8051
 Email: info@chem-flowtronics.com
 Web: www.chem-flowtronics.com